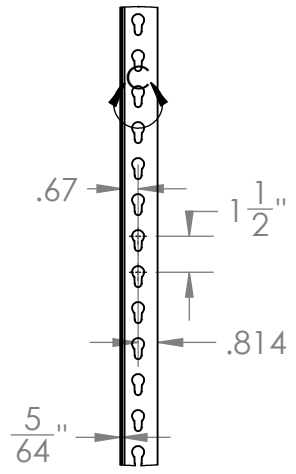
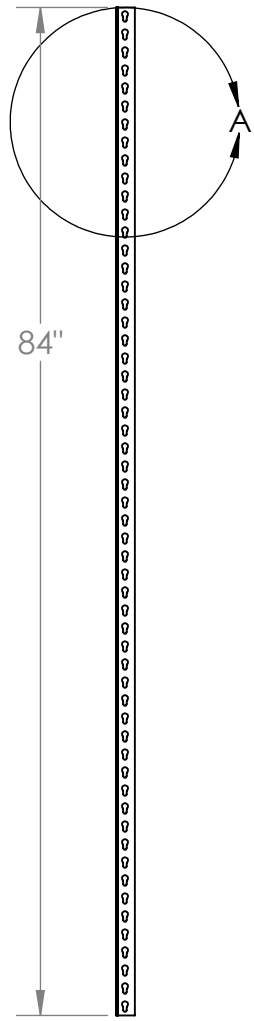


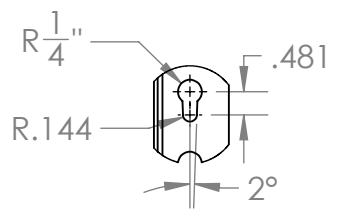
2

1

Front View

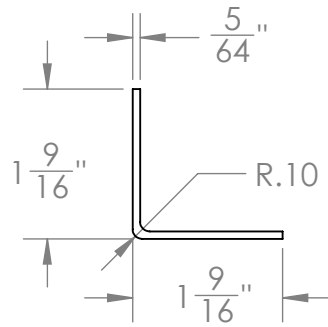


DETAIL A
SCALE 1 : 8



DETAIL C
SCALE 1 : 4

Top View



SCALE 1 : 2

Isometric View



B

B

A

A



PROPRIETARY AND CONFIDENTIAL

THE INFORMATION CONTAINED IN DRAWING IS THE SOLE PROPERTY OF DIXIE SHELVING CONCEPTS. ANY REPRODUCTION IN PART OR AS A WHOLE WITHOUT THE WRITTEN PERMISSION OF DIXIE SHELVING CONCEPTS IS PROHIBITED.

UNLESS OTHERWISE SPECIFIED:	
DIMENSIONS ARE IN INCHES TOLERANCES: ± 1/32"	
MATERIAL: 14 GAUGE STEEL - 50 ksi MAX YIELD	
FINISH: POWDER COATED	
PART FOR ASSEMBLY OF: WIDESPAN STORAGE SYSTEM	
COMMENTS: MINIMUM 4 OF THESE PARTS NECESSARY FOR ASSEMBLY	
DO NOT SCALE DRAWING	

DRAWN BY: NICK LOUPE (6/14/2018)

TITLE:
**Widespan:
Angle Post - 84 in.**

SIZE A	DWG. NO. 1	REV
SCALE: 1:16		WEIGHT: 5.5 LBS. SHEET 1 OF 1

2

1