

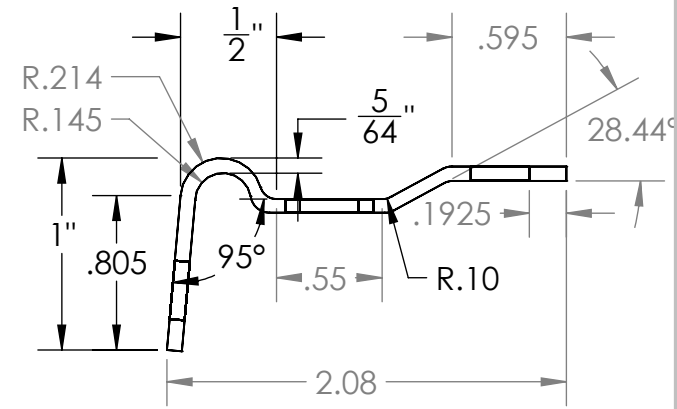
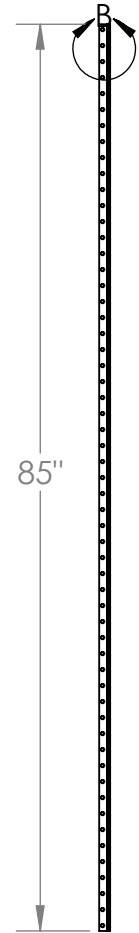
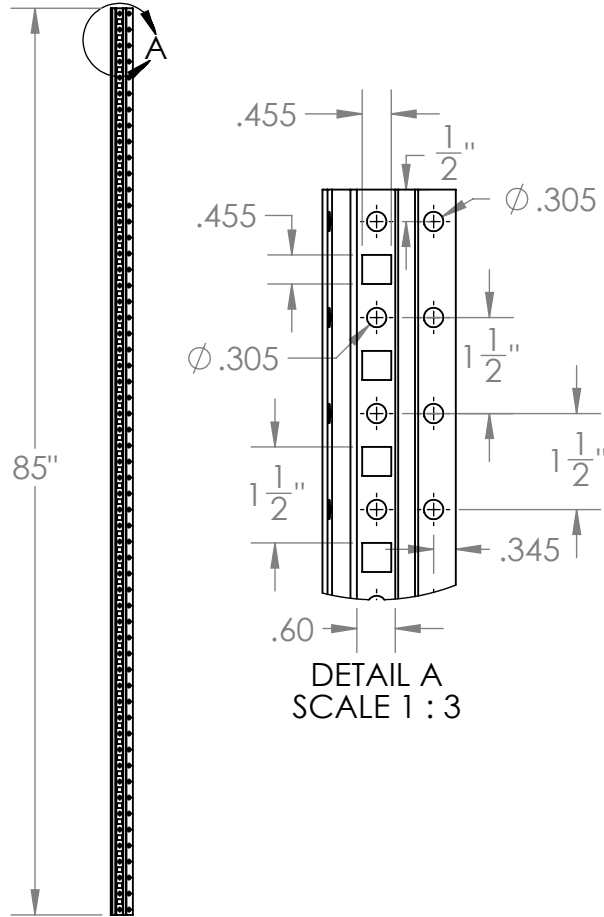
2

1

Front View

Side View

Top View



DETAIL A  
SCALE 1 : 3

DETAIL B  
SCALE 1 : 3

SCALE 1 : 1

PROPRIETARY AND CONFIDENTIAL

THE INFORMATION CONTAINED IN DRAWING IS THE SOLE PROPERTY OF DIXIE SHELVING CONCEPTS. ANY REPRODUCTION IN PART OR AS A WHOLE WITHOUT THE WRITTEN PERMISSION OF DIXIE SHELVING CONCEPTS IS PROHIBITED.

UNLESS OTHERWISE SPECIFIED:

DIMENSIONS ARE IN INCHES  
TOLERANCES: ± 1/32"

MATERIAL: 14 GAUGE STEEL - 50 ksi MAX YIELD

FINISH: POWDER COATED

PART FOR ASSEMBLY OF:  
INDUSTRIAL METAL SHELVING

COMMENTS:  
- POSTS AVAILABLE IN THE FOLLOWING HEIGHTS: 73", 85", 97", 109", 121", AND 145"  
- CLIPS SECURE SHELVES INTO POSTS THROUGH THE SQUARE HOLES ON POST FACE

DO NOT SCALE DRAWING

DRAWN BY: NICK LOUPE (6/27/2018)

TITLE:

**Industrial Metal Shelving:  
Post - 85 in.**

SIZE

**A**

DWG. NO.

**1**

SCALE: 1:18 WEIGHT: 4.6 LBS. SHEET 1 OF 1



2

1

B

B

A

A